

				定速刹车锂电启动+铝合金支架+全塑料草箱			宁波市德霖机械有限公司	
							S482VHY-T6	
标记	处数	更改文件号	签字	日期	图样标记	重量	比例	
设计			标准化				1:5	
审核								
工艺			日期		共 页	第 页		

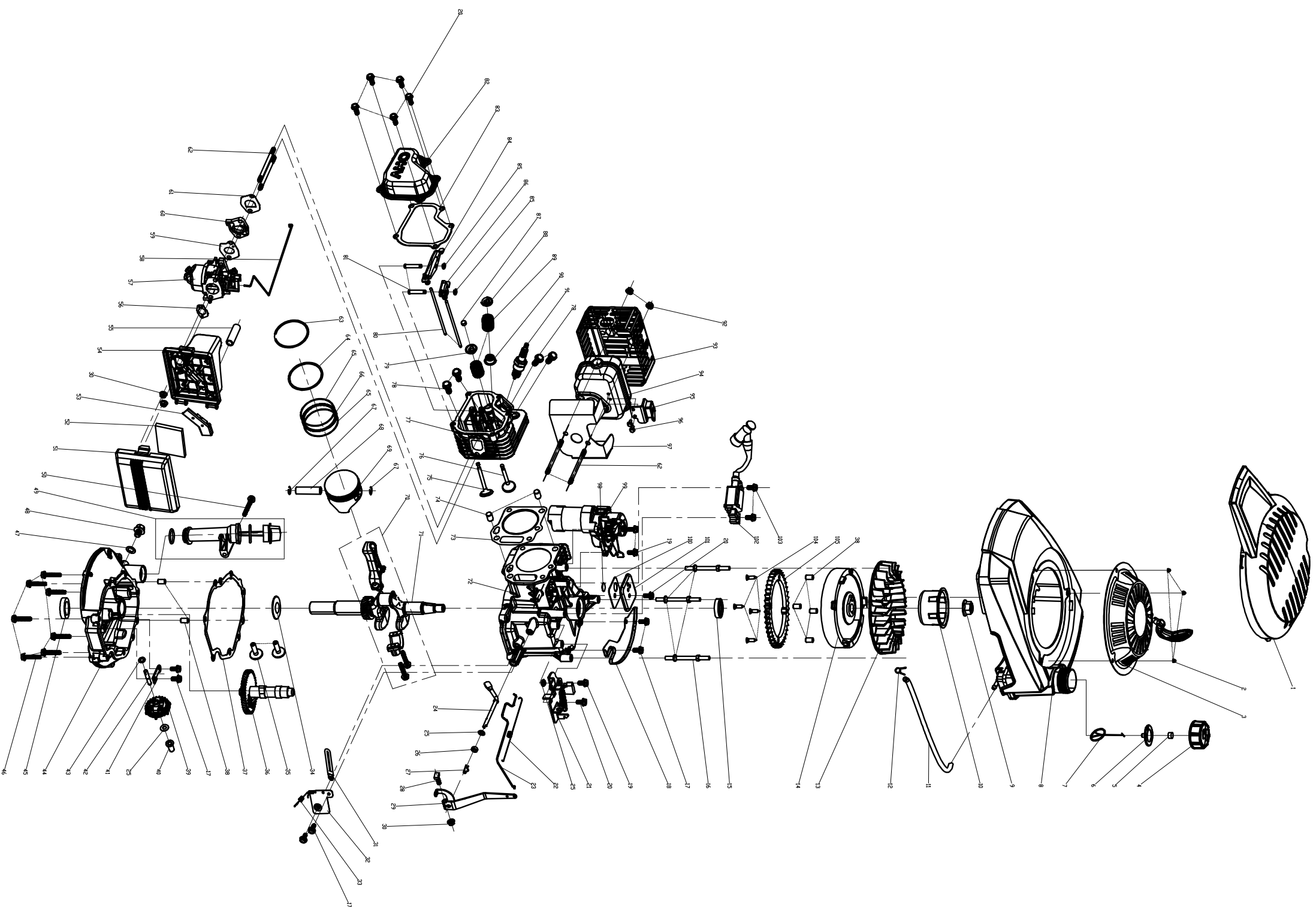
PM 4835E-851790-S482VHY-T6-Part list-2018112

Model: S482VHY			
	Material No.	English Description	Qty
1	60100020000	blade bolt	1
2	70040070000	blade washer	1
3	70130960000	The blade assembly	1
4	70140780000	Blade Adapter Assy	1
5	20660240000	belt cover	1
6	70070570130	Precursor Left bracket	1
7	60040020000	Half round head square neck bolts	4
8	60170290000	Phillips flat head self tapping screw	26
9	20200310000	deck front mask	1
10	20200300000	front mask	1
11	20200330000	Face twist before hand	1
12	20200320640	Face twist before hand	1
13	60240300000	Type D ring	2
14	70180400000	Height Adjustment Pull Rod	1
15	70070560130	Precursor Left bracket	1
16	70742070130	deck welding assy.	1
17	60200550000	flat Gasket	2
18	60040160000	Half round head square neck bolts	4
19	70080230290	Aluminum alloy stent under	1
20	60060390000	Hexagon head bolts	1
21	T852530	petrol engine	1
22	60080280000	Dual-head bolts	2
23	60200530000	Square gasket	2
24	60370020000	"O" ring	1
25	20460010000	inlet	1
26	20460030000	inlet	1
27	20590020000	cable stopper	1
28	20400140000	rear baffer	1
29	20160190000	mulching plug	1
30	20400150000	rear baffer	1
31	60300030000	R type pin	2
32	70030840000	Shaft for rear discharge cover	1
33	20750210000	rubber dust proof board	1
34	70080240290	Aluminum alloy stent under	1
35	70060120130	Bracket plate for defelctor	1
36	60170580000	self tapping screw	2
37	70030820000	Mulch Shaft	1
38	60390250000	mulch board spring	1
39	20120120640	mulching board	1
40	20110160000	side discharge cover	1
41	20650200000	Fixed block holder	1

42	60380600000	Limit block spring	1
43	20490090000	The side row overlays the limit block	1
44	60200580000	Gasket	1
45	60171220000	Cross recessed countersunk head tapping screw	2
46	20620300290	outer cover of hub	2
47	20880470640	wheel core	2
48	60180120000	Resilient washer	4
49	20610170000	inner cover of hub	2
50	70840310000	front drive assy.	1
51	60410660000	Precursor tension spring	2
52	60320270000	v belt	1
53	70050310000	Brake spring	1
54	60410560000	selfpropelled spring	1
55	60240060000	spring washer	6
56	70300200000	Ratchet Wheel L	1
57	21070030000	selfpropelled ratchet washer	4
58	60200110000	flat Gasket	2
59	20430030060	rear wheel axle sleeve	2
60	60290070000	bratchet pin	2
61	70860500000	selfpropelled assy.	1
62	60060530000	Bolt	2
63	70290350000	Rear plate	2
64	70300190000	Ratchet Wheel L	1
65	70850810000	rear drive assy.	1
66	20620290290	outer cover of hub	2
67	20880460640	wheel core	2
68	20610160000	inner cover of hub	2
69	60150170000	Hex flange lock nuts	2
70	20260240000	height adjustment handle	1
71	20550050640	Twist the lid	1
72	20100100000	bottom of grass box	1
73	20060070060	air-out board of fabric grass bag cover	2
74	60171930000	large batter srewdriver	6
75	20100090000	bottom of grass box	1
76	60380590000	cover spring	1
77	20390040000	rear discharge base	1
78	60170600000	Phillips flat head self tapping screw	8
79	60380580000	cover spring	1
80	70030830000	Shaft for rear discharge cover	1
81	20380100000	rear discharge cover	1
82	20080100640	top of grass box	1
83	20060060000	air-out board of fabric grass bag cover	1
84	20080110000	top of grass box	1
85	20340060130	foam pipe	1
86	70550100130	Self-propelled Lever	1

87	70500620031	upper handrail	1
88	20030030000	lever guard	1
89	60090250000	Round head Hexagon bolt	2
90	60150080000	Self-locking nut	2
91	70230090000	Rope Guide	1
92	60130020000	Cap nut	1
93	20580040640	quick fix knob	2
94	60240290000	washer	2
95	60300090000	type pin	2
96	70220020000	Quick Fix Handle	2
97	60190040000	Large flat washer	2
98	60200470000	flat Gasket	2
99	20040140640	triangle knob	2
100	60140080000	Hexagon nut	2
101	70520390130	lower handrail	1
102	60150020000	Hex lock nut	2
103	60090220000	Round head Hexagon bolt	2
104	70220140640	Aluminum alloy rapid wrench	2
105	70030850000	Rapid wrench rotation axis	2
106	60180130000	Resilient washer	2
107	70080250290	Aluminum alloy stent under	2
108	60090240000	Round head Hexagon bolt	2
109	20240020000	fastener	1
110	70810040000	brake cable	1
111	70780220000	selfpropelled cable	1
112	20650170000	control board upper cover	1
113	70540084640	stop lever	1
114	70090080000	internal hexagonal wrench	1
115	20650140000	control board upper cover	1
116	30030030000	electric start switch	1
117	60171090000	Cross recessed countersunk head screws	4
118	20440110000	cable fastener	2
119	30090210000	The plug-in circuit board assembly	1
120	20650150000	control board upper cover	2
121	20650160000	control board upper cover	2
122	20770140000	battery upper cover	1
123	20650180000	control board upper cover	1
124	30050090000	Charger assembly	1
125	30090150000	The plug-in circuit board assembly	1
126	30010330000	Insert fuse	2

T6汽油机分解图



宁波市德隆机械有限公司			
T4.75带刹车不带调速款			
设计	审核	日期	比例
制图	校对	1	1:4
工艺	标准	共1页	第1页

比例: 1:4
 日期: 2011.10.10
 图号: T6
 零件号: 100
 数量: 1
 规格: 1:4
 材料: 1:4
 备注: 1:4

835E-851790-T6-Engine-Part list-201

	Material Code	English	Qty
	25190160640	The transparent cover	1
1	60130020000	Cap nut	3
2	75430110000	pull starter assy.	1
3	25170110000	fuel tank cap	1
4	80010070000	fuel tank cap sponge	1
5	60440340000	Fuel Tank Cap seal gasket	1
6	25250010000	connect cable of fuel	1
7	25190190000	The transparent cover	1
8	60140050000	Hex flange nuts	1
9	75210010000	starter hub	1
10	25160140000	fuel pipe	1
11	60230010000	fuel pipe lock clamp II	1
12	25040110000	fan	1
13	75390230000	flywheel assy	1
14	60360090000	oil seal	1
15	60080230000	Dual-head bolts	3
16	60060520000	Bolt	8
17	75030140000	wind shield	1
18	60060550000	Bolt	3
19	60060530000	Bolt	7
20	75380900000	detent assy.	1
21	60410050000	valve spring	1
22	75160060000	Handspike of Valve	1
23	75290010000	rate-limiting rocker arm	1
24	60200490000	Gasket	3
25	60360080000	oil seal	1
26	60300040000	R type pin	1
27	60060730000	bolt	1
28	75070010000	throttle rocker arm	1
29	60140020000	Hex flange nuts	3
30	60450010000	clip	1
31	75360010000	single phrase throttle	1
32	60410470000	throttle control spring	1
33	60200180000	clockwise gear gasket	1
34	75250010000	pin	2
35	75470020000	camshaft assy.	1
36	75720240000	Respirator head gasket	1
37	60280030000	spacing pin	6
38	75520020000	rate-limiting gear assy	1
39	25070010000	Sliding Sleeve	1
40	75280020000	rate-limiting gear shaft	1
41	75270030000	rate-limiting gear shaft	1
42	60200060000	Gasket	1
43	75240120000	Crank box cover	1
44	60360100000	oil seal	1
45	60060590000	Bolt	7
46	60200150000	Oil drain bolt gasket	1

47	60061020000	Oil drain bolt	1
48	25200130000	Lubricating Gauge Ass	1
49	60060630000	Bolt	1
50	25120060000	Air Filter Cover	1
51	25300120000	Foam filter	
52	25020050000	Vent groove cover pla	1
53	25110100000	An air filter base.	1
54	25030070000	waste pipe	1
55	75730100000	Air filter paper pad	1
56	75410630000	Carburetor	1
57	75760160000	Choke lever	1
58	75730030000	Carburetor paper pad	1
59	25090010000	Air Inlet Pipe	1
60	75730020000	Carburetor paper pad	1
61	60080030000	Dual-head bolts	4
62	75130130000	Piston Ring I	1
63	75130140000	Piston Ring II	1
64	75090060000	Guide Rail	2
65	75000070000	Bushing Ring	1
66	60400020000	Piston Pin circlip	2
67	60310010000	piston pin	1
68	75120090000	Piston	1
69	75460070000	connecting rod assy.	1
70	75510750000	crankshaft assy.	1
71	75500160000	crankshaft box assy.	1
72	75720100000	Cylinder head gasket	1
73	60280020000	spacing pin	2
74	75190040000	Exhaust Valve	1
75	75170040000	IntakeValve	1
76	75490090000	cyclinder head assy.	1
77	60050030000	locking bolt	4
78	75180020000	Spring Coil of Exhaust	1
79	75350030000	push rod	2
80	75290050000	Valve rocker shaft	2
81	75080040000	cylinder head cover	1
82	75720300000	Cylinder head gasket	1
83	75230031000	Exhaust valve rocker	1
84	60240240000	washer	2
85	75230030000	Air intake door rocker	1
86	75200010000	Top Cover of Exhaust	1
87	75180010000	Spring Coil of Intake V	1
88	60380090000	valve spring	2
89	60360130000	oil seal assy	1
90	75140010000	spark plug	1
91	60150100000	Self-locking nut	2
92	75530090000	muffler cover assy.	1
93	75540120000	muffler assy.	1
94	30071030000	The choke controller	1
95	60060040000	Hex flange bolts	2
96	75740080000	Muffler pad	1

97	75100030000	Respirator valve plate	1
98	79991310000	Start the motor	1
99	75720310000	Respirator head gaske	1
100	75400030000	Valve rocker shaft	2
101	75370070000	ignition assy.	1
102	60060580000	Bolt	2
103	60170860000	Cross recessed count	4
104	25250120000	The fuel tank cap Lan	1